

Project Estimation

The EXe 2.5 InSoFast Panel is optimized for exterior usage. If you choose to use the InSoFast Plus method with additional sheet foam or the UX 2.0 panel, please note that all references and drawings are assuming the EXe 2.5 panel thickness.

InSoFast panels are generally estimated the same as siding. Take the total square footage of walls less openings (openings calculated with 6" of waste on all sides). Gable end square footage can be estimated by adding 2' to the height and width. Do not overestimate. Miscut panels can be glued back together and reused.

Tools and Supplies

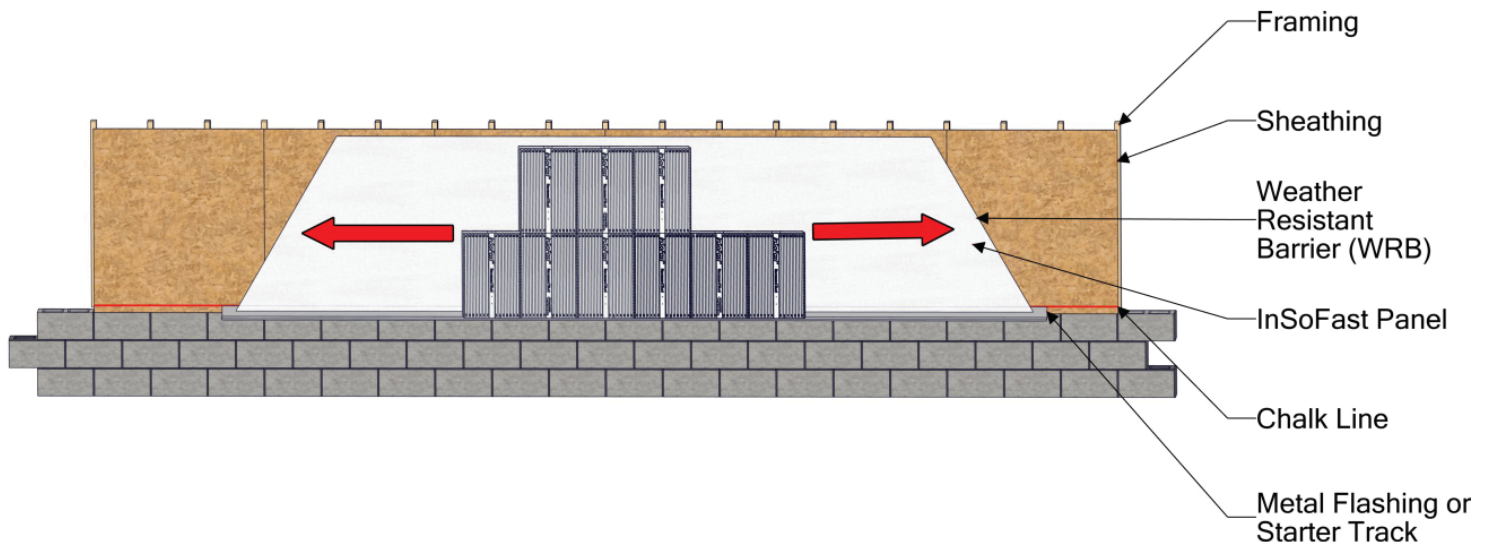
- Screw gun
- Optional nail gun
- Long snap off blade utility knife
- Saw – hand, jig, skill, table
- Gap and crack foam for sealing corners/ openings and at the top of the wall

Wall Preparation per Industry Standards

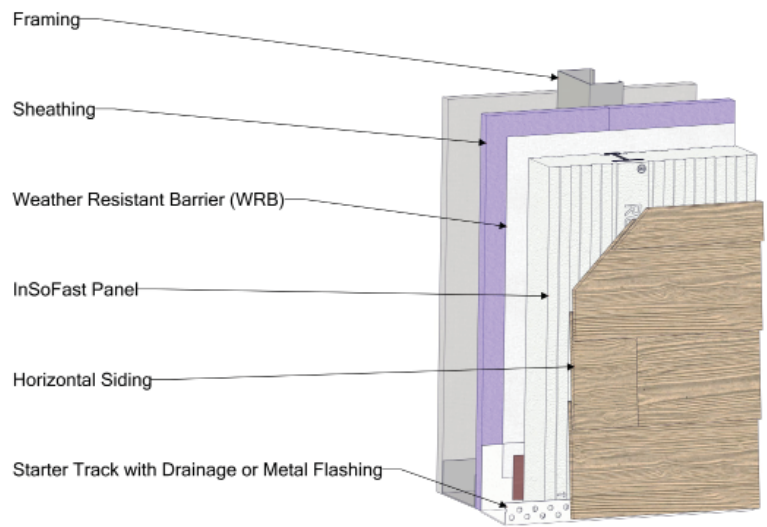
All openings, penetrations, etc should be properly flashed, sealed, and integrated into the weather resistant air barrier (WRB) so that the wall assembly is water tight before InSoFast panels are installed. The WRB products should be installed according to industry standard practices and are independent of InSoFast insulation panel.

Basic Installation Procedure

Snap a straight line for the starter track or metal flashing at the bottom of the wall so that the bottom of the InSoFast panel is not exposed.



For long walls, installation can be expedited by starting at a centered position with a full panel and working outward in both directions. Stagger or offset the panels on the second and subsequent rows to form a running bond interlock pattern, making the panel even more weather tight.



Bottom of Wall with Starter Track

Orientation of Panels

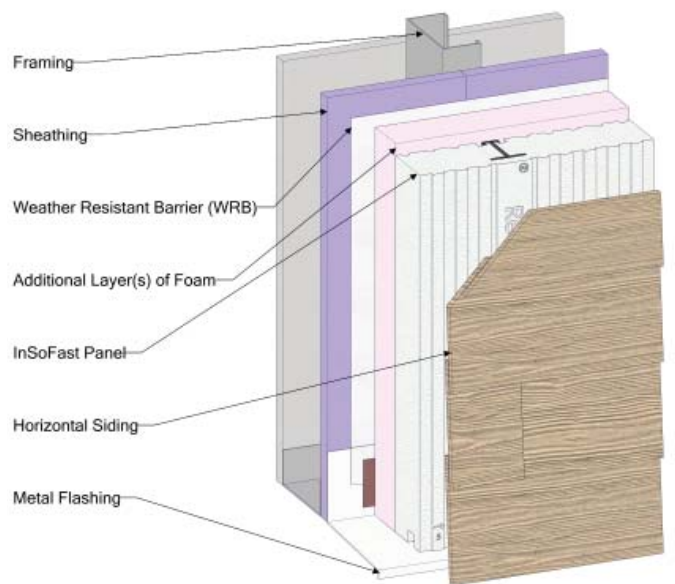
The word "InSoFast" must face outward toward the installer with the exposed ribbed side of the studs going against the wall or sheathing. No black strips will be visible.

InSoFast panels are installed with the 4' width dimension running horizontally. The 2' height dimension, studs and moisture control channels all run vertically.

The top edge of the panel features the interlocking tongue and the bottom edge features the interlocking groove.

When cutting panels for corners, openings, and penetrations, leave a 1/4" gap to fill with foam sealant.

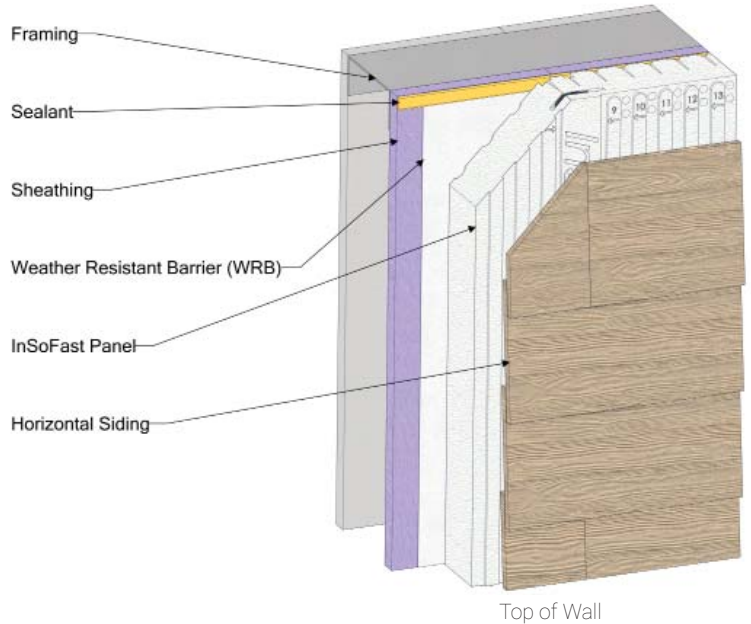
For easier installation, do not install the upper row of fasteners in the InSoFast panel until the panel above has been set in place.



Bottom of Wall - InSoFast Plus

Top of the Wall

Prior to installing the top row of InSoFast panels, apply a continuous bead of sealant.



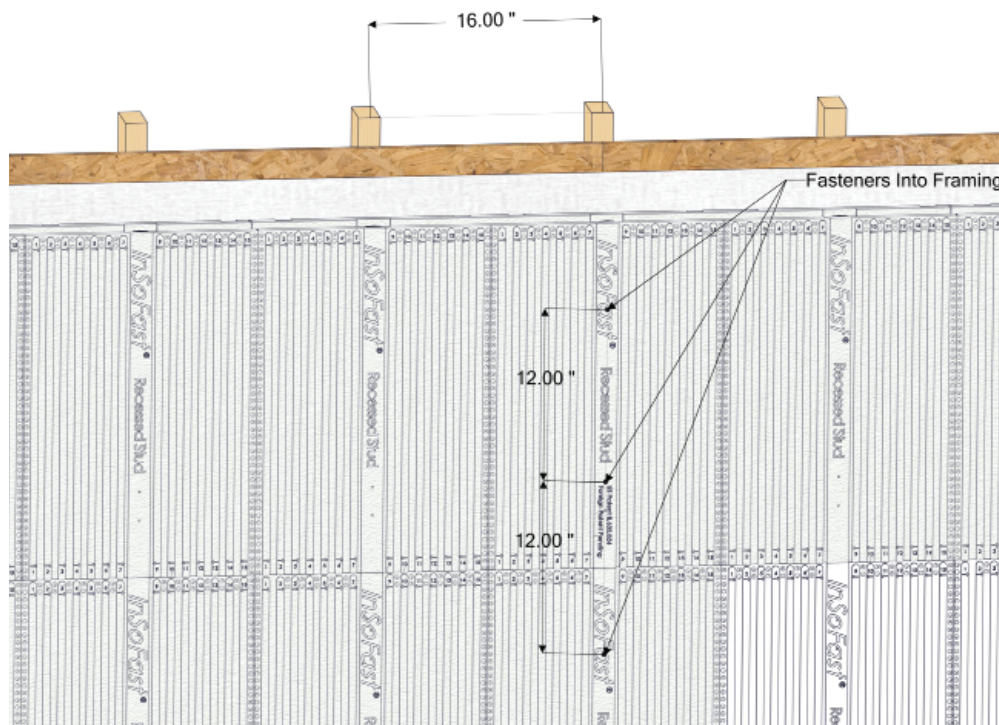
Installing Panels over Framed Walls

Screw/Nail Attachment Pattern

Using the indicator markings on the panel, screws are to be placed 12" o.c. along the InSoFast studs per code report. InSoFast panels are generally screwed in place, however, you may opt to use nail guns to install the panels and siding provided the temperature is above 60° F for the stud to accept nails. It is up to the contractor and/or building official to determine the suitability for the nails in regard to use, length, and spacing. See page 8.

For 16" O.C. Framing

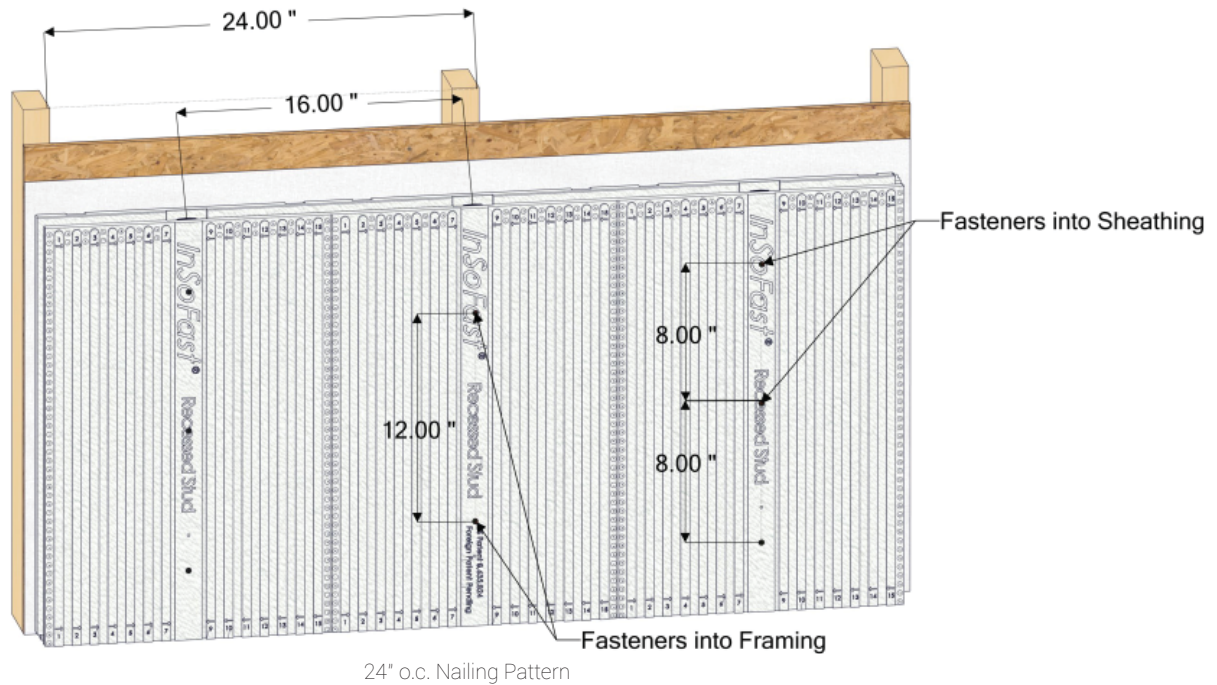
InSoFast studs are 16" o.c. Install the first panel so that the built-in studs line up with and attach to the wall's studs.



16" o.c. Nailing Pattern

For 24" O.C. Framing

Attaching to 24" o.c. framing requires a screwable structural sheathing, such as OSB, plywood, or SIPs, and requires the use of 8" o.c. indicator marks. The number of screws is dependent on wind load requirements.



Installing Panels over Concrete or Masonry Walls

Adhesive Attachment

We have tested and recommend PL Premium 3X Construction Adhesive® for bonding to the InSoFast studs. Other formulas and brands may not work as expected. Cure time is dependent on temperature and humidity. Ensure sufficient time for the adhesive to set and cure before attaching exterior finishes or use mechanical fasteners. PL Premium 3X is freeze-thaw stable but it does not cure during freezing temperatures.

On the back of the panel, apply a 3/8" bead of PL Premium 3X along the dove-tailed ribbing of each InSoFast stud. Rougher or uneven surfaces may require a thicker bead.

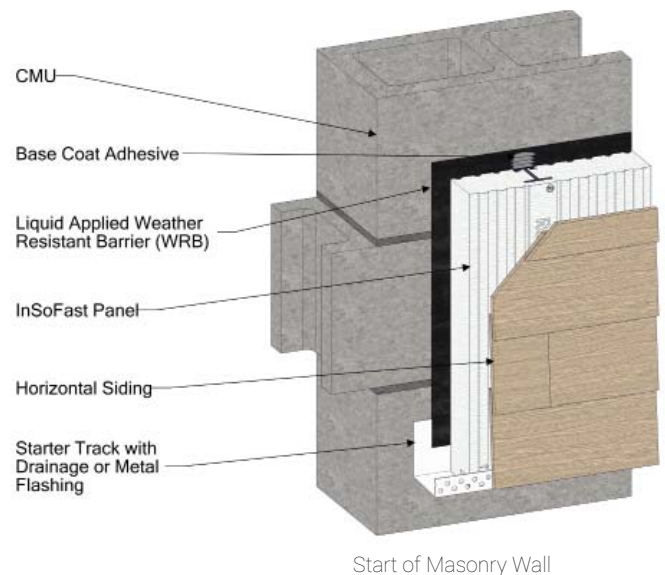
Press panels firmly into place against the wall. On windy days, the panels may need supplemental bracing or mechanical attachment to secure the panels until the adhesive has set.

Base Coat Attachment

When using liquid applied WRB, panels may be applied using a compatible adhesive/base coat. See adhesive/base coat data sheet and www.InSoFast.com for technical data and information sheet.

Mechanical Attachment

If you choose to mechanically attach InSoFast panels to concrete or masonry walls, screws are to be placed 12" o.c. along the InSoFast studs. Powder actuated tools are not recommended.



Outside Corners

Corner with Sheet Metal Backer

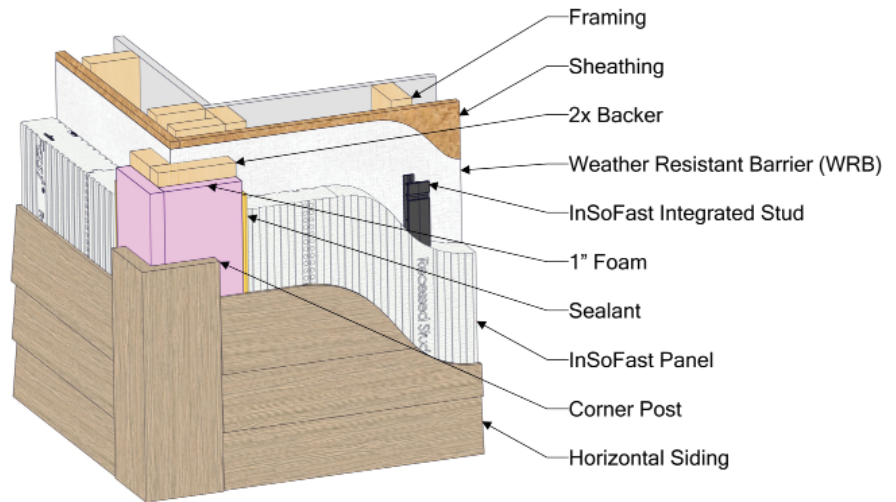
Overlap the panels past the corner by the thickness of the panel (i.e. 2½" for EXe 2.5) creating an overlapping butt joint. Leave a ¼" gap at the butt joint for foam sealant. Corner posts can be attached with a 4" screws directly back to the framing when an InSoFast stud is not located near enough to the corner for siding attachment. Sheet metal flashing may be added behind the corner post for siding fastening at the corner post.



Outside Corner with Sheet Metal Backer

Corner with Wood Backing

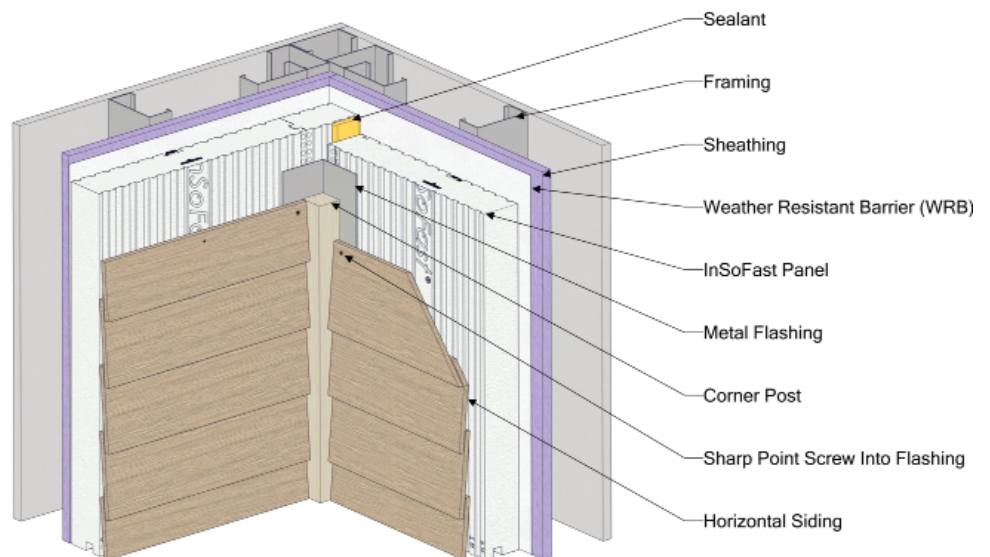
Another option is to install 2x lumber with 1" foam board added to provide a solid 2-1/2" thick backing as needed. This is done prior to installing InSoFast panels.



Outside Corner with Backing

Inside Corners

Place the InSoFast panels together in the corners, leaving a ¼" gap for foam sealant. Install metal corner flashing to provide attachment for the corner post and siding.

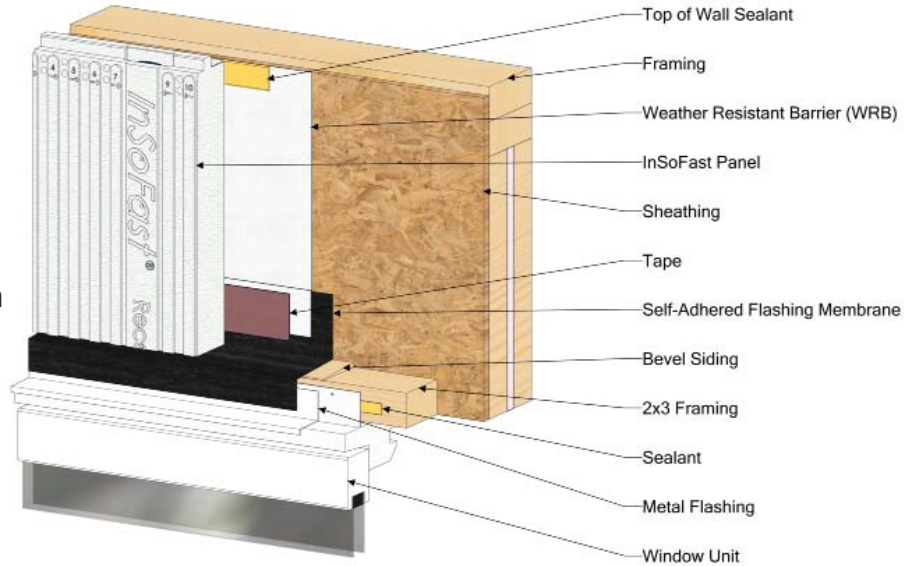


Inside Corner

Window Detailing Options

Outset Windows

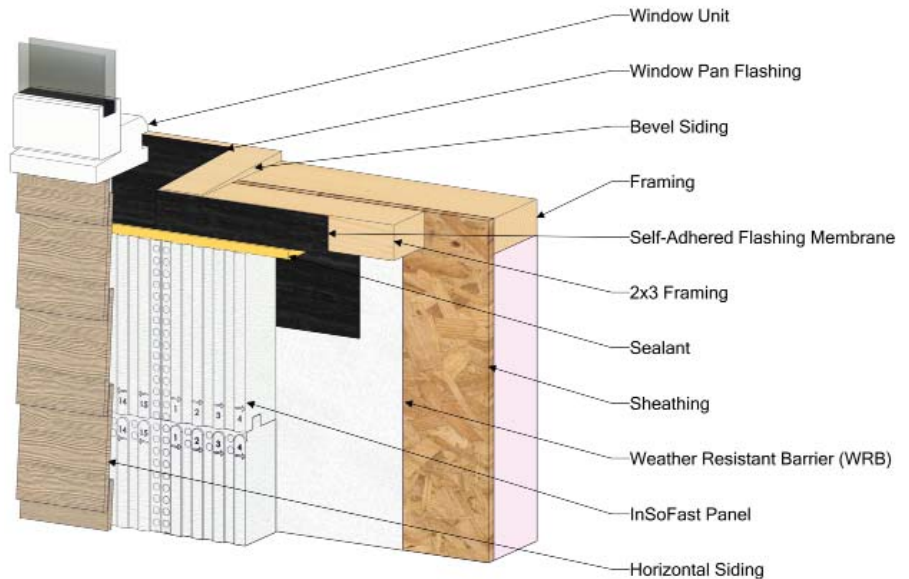
An outset window is installed with the nailing flange flush with the front face of the InSoFast panels. Install window and flashings as per window manufacturer's installation instructions prior to installing InSoFast panels. See www.InSoFast.com for more window options and details.



Outset Window - Head Jamb



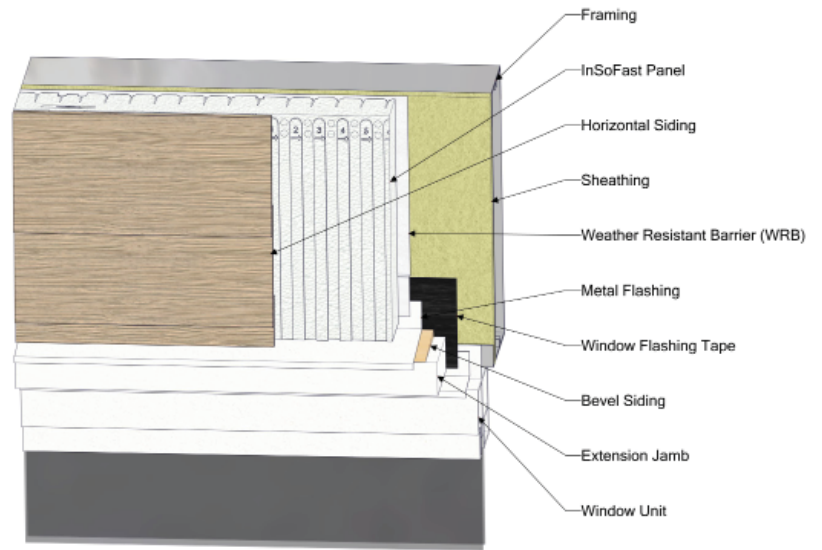
Outset Window - Side Jamb



Outset Window - Bottom Sill

Inset Windows

An inset window is installed with the nailing flange flush to the exterior sheathing layer of the wall. It requires sill and jamb extensions for the exterior. Install window and flashings as per window manufacturer's installation instructions prior to installing InSoFast panels. See www.InSoFast.com for more window options and details.



Inset Window - Head Jamb



Inset Window - Side Jamb



Inset Window - Bottom Sill

Other Through-Wall Penetrations

Mechanical penetrations are treated as they would be for typical construction.

All through-wall penetrations should be installed and sealed back to the WRB layer before the InSoFast panels are installed. Install penetrations to manufacturer's installation instructions. Cut and fit the InSoFast panel around the penetration, leaving a ¼" gap. Fill the gap between the penetration and the InSoFast panel with a foam sealant.

Installing Exterior Finishes

Siding/Claddings

InSoFast panels can be used with virtually any type for siding or cladding. The panels are rated for up to 2" thick adhered stone or brick. For all finish types, please refer to the finish manufacturer's installation instructions for fastener size and spacing.

Fastener Selection

Use corrosion-resistant fasteners long enough to penetrate 1" into the embedded InSoFast stud.

Cold Weather Installation

If you opt to use nail guns to install InSoFast panels and/or siding, it is only recommended when temperatures are above 60° F. Smaller nail size and shank diameter will perform better at lower temperatures. It is up to the contractor, and/or building official to determine the suitability for the use of nails when installing siding. It is important for the contractor to verify that the fasteners do not crack the stud and that they are not over-driven or under-driven into the stud.

InSoFast LLC Limits of Liability and Disclaimer of Warranty:

Because use conditions and applicable laws may differ from one location to another and may change with time, Customer is responsible for determining whether products and the information in this document are appropriate for use and are in compliance with applicable laws and other government enactments. InSoFast LLC assumes no obligation or liability for the information in this document. **NO WARRANTIES ARE GIVEN; ALL IMPLIED WARRANTIES OF MERCHANTABILITY OR FITNESS FOR A PARTICULAR PURPOSE ARE EXPRESSLY EXCLUDED. INSOFAST LLC SHALL NOT BE RESPONSIBLE FOR CONSEQUENTIAL, INDIRECT OR INCIDENTAL DAMAGES (INCLUDING LOSS OF PROFITS) OF ANY KIND.** InSoFast LLC reserves the right to make any changes according to technological progress or further developments and assumes no liability for providing such information and advice including the extent to which such information and advice may relate to existing third party intellectual property rights. Reference to trade names used by other companies is neither a recommendation, nor an endorsement of any product and does not imply that similar products could not be used. It is the responsibility of both the specifier and the purchaser to determine if a product is suitable for its intended use.

Nationwide Code Compliance: DrJ Engineering TER # 1910-03

Made in USA · US Patent No. 8,635,824 · CA Patent No. 2,761,810

© 20 InSoFast, LLC · All Rights Reserved

