

A concrete floor can be insulated with the InSoFast UX 2.0 or EX 2.5 standard panel. The instructions are the same for either panel. The photos show the UX 2.0 panel.

Tools and Supplies

- Long snap off blade utility knife
- Saw – hand, jig, circular, or table saw
- Gap and crack foam for sealing around the outside edges of the floor and around any penetrations

Floor Prep and Vapor Barriers

Apply a concrete sealer to block moisture or install a vapor barrier on the concrete floor prior to installing the InSoFast panels.

If you have new construction with a vapor barrier already installed underneath the concrete slab, it is not necessary to put another vapor barrier on top of the concrete floor.

Using InSoFast on Both Walls and Floors

Install the InSoFast panels on the wall first. This minimizes the chance of water getting on top of the subflooring in the event the wall leaks.



Install panels in a running bond pattern.



Panels installed over vapor barrier.



Install InSoFast wall panels first.

Installation Methods

There are four basic installation methods: floating, glue down, screwed down, and fully adhered.

The floating method is recommended for carpet, laminate, and wood floors. This is a simpler, quicker installation that makes the concrete floor feel softer and more comfortable.

The glue down method can be used for carpet, laminate, and wood floors.

The screw down method can be used for any flooring type.

The fully adhered method is recommended for tiled area to create a solid base that eliminates movement.

Floating Installation

The floating method places the panels directly on the concrete without any adhesive. Interlock the panels together with the tongue and grooved edges in a running bond or staggered pattern.



Interlock the panels.

Glue Down Installation

The glue down method bonds the panels in place with a 3/8" bead of PL Premium 3X Stronger Construction Adhesive along dove-tailed ribbing of each stud. One 28 oz. tube covers 50 s.f.



Screw Down Installation

Attach InSoFast panels to the concrete floor by installing concrete screws through the studs.



Glue down installation.

Fully Adhered Installation

For tile applications, the InSoFast panels are set in a bed of thin set tile adhesive with a notched trowel per manufacturer's instructions.



Non-bearing wall framing.

Interior Partition Walls

Install InSoFast panels up to existing interior partition walls. Non-bearing interior partition walls can be framed directly on top of the subfloor with no need for a treated bottom plate.



Butting up to existing interior wall.

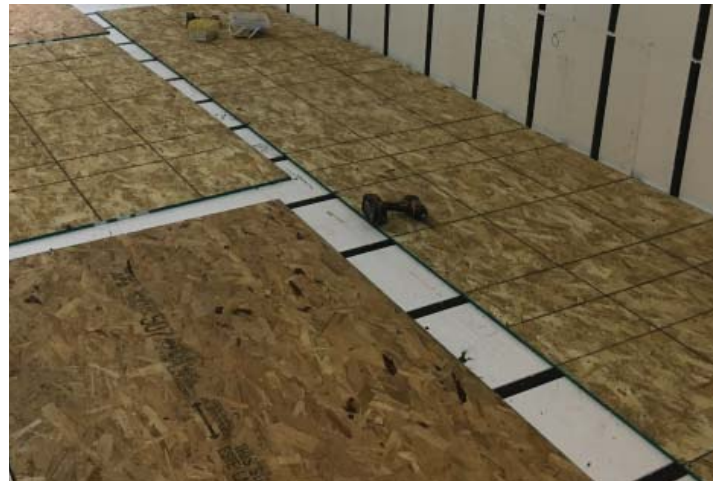


Radiant heat board over InSoFast.

Installing Subflooring

Install subflooring with a gap for expansion following per manufacturer's instructions. Fasten with standard coarse thread all-purpose construction screws.

When panels are installed as a floating floor, it is important to layout the subflooring so that the long seam of the plywood does not line up with the seams in the InSoFast panels. The short seams of the plywood should land over the top of a stud.



Cut subflooring so that it doesn't line up on the InSoFast seams.



Line up end seam over InSoFast stud.



Plywood subflooring.

Uneven Floors

Prior to installing panels, the low spots can be filled in with concrete patch or concrete floor leveler.

If you notice an area with excessive deflection after the subflooring has been installed, fill the void with adhesive or spray foam. Simply drill a hole through the subflooring and panel down to the void and inject PL Premium Construction Adhesive 3X or gap and crack spray foam. Using too much spray foam will cause a bulge in the floor. Avoid walking on this area until the adhesive or spray foam has set.

InSoFast LLC Limits of Liability and Disclaimer of Warranty:

Because use conditions and applicable laws may differ from one location to another and may change with time, Customer is responsible for determining whether products and the information in this document are appropriate for use and are in compliance with applicable laws and other government enactments. InSoFast LLC assumes no obligation or liability for the information in this document. **NO WARRANTIES ARE GIVEN; ALL IMPLIED WARRANTIES OF MERCHANTABILITY OR FITNESS FOR A PARTICULAR PURPOSE ARE EXPRESSLY EXCLUDED. INSOFAST LLC SHALL NOT BE RESPONSIBLE FOR CONSEQUENTIAL, INDIRECT OR INCIDENTAL DAMAGES (INCLUDING LOSS OF PROFITS) OF ANY KIND.** InSoFast LLC reserves the right to make any changes according to technological progress or further developments and assumes no liability for providing such information and advice including the extent to which such information and advice may relate to existing third party intellectual property rights. Reference to trade names used by other companies is neither a recommendation, nor an endorsement of any product and does not imply that similar products could not be used. It is the responsibility of both the specifier and the purchaser to determine if a product is suitable for its intended use.